



Ohkagakuen University

Japan Study Program

(English)

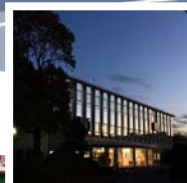
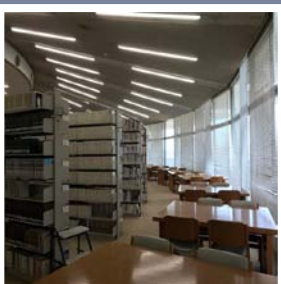
The Pull of Ohkagakuen University

- ♥ School customs to value the tradition as a women's university
- ♥ Careful guidance based on the motto: 'Be kind in education.'
- ♥ Strengthened curriculum in which students can learn a wide range of knowledge of the world as well as that of contemporary Japanese society.
- ♥ The existence of a Course where students can learn a lot about tourism
- ♥ Enriched fieldwork opportunity in collaboration with the local government
- ♥ Excellent environment to improve Japanese and English
- ♥ Nationally well-known campus life where students play their roll independently
- ♥ Easy access to main cities such as Tokyo and Osaka
- ♥ A good site for a school, adjacent to a big city, still rich in nature



Contents

♠ The Pull of Ohkagakuen University	2
♠ Message from the Dean of the SLADE	3
♠ Profile of Ohkagakuen University	4
♠ Introduction of the campus facilities	5
♠ Curriculum	6
♠ Annual Events of the School of Liberal Arts	7
♠ Accommodation	8
♠ Living Expenses	9
♠ Q & A	10
♠ Access Information	11
♠ Contact Details	12



OHKAKU



Message from the Dean of the SLADE

The School of Liberal Arts, Department of English (SLADE) at Ohkagakuen University, welcomes international students from the bottom of its heart. The students of the SLADE have the experience of learning English abroad ten months after entering the university. They, therefore, are open-minded toward foreign people and cultures. Half of the faculty members are foreigners; their mother tongues being English, Korean and Chinese. All the Japanese staff has an experience of studying or doing research overseas. Still more, there is a Korean staff member in the office. All the faculty and staff members are ready to support you and enrich your experiences in Japan.





桜花学園大学

Since it established a nurse's school, in which it has its rise, in 1903, Ohkagakuen Academy has taken on the role of women's education for more than a hundred and ten years. Its foundation spirit, Instilling a sense of grace and refinement in the heart and minds of modern women, is still the basic principle to manage the Academy. It prides itself on its distinguished tradition of women's education.

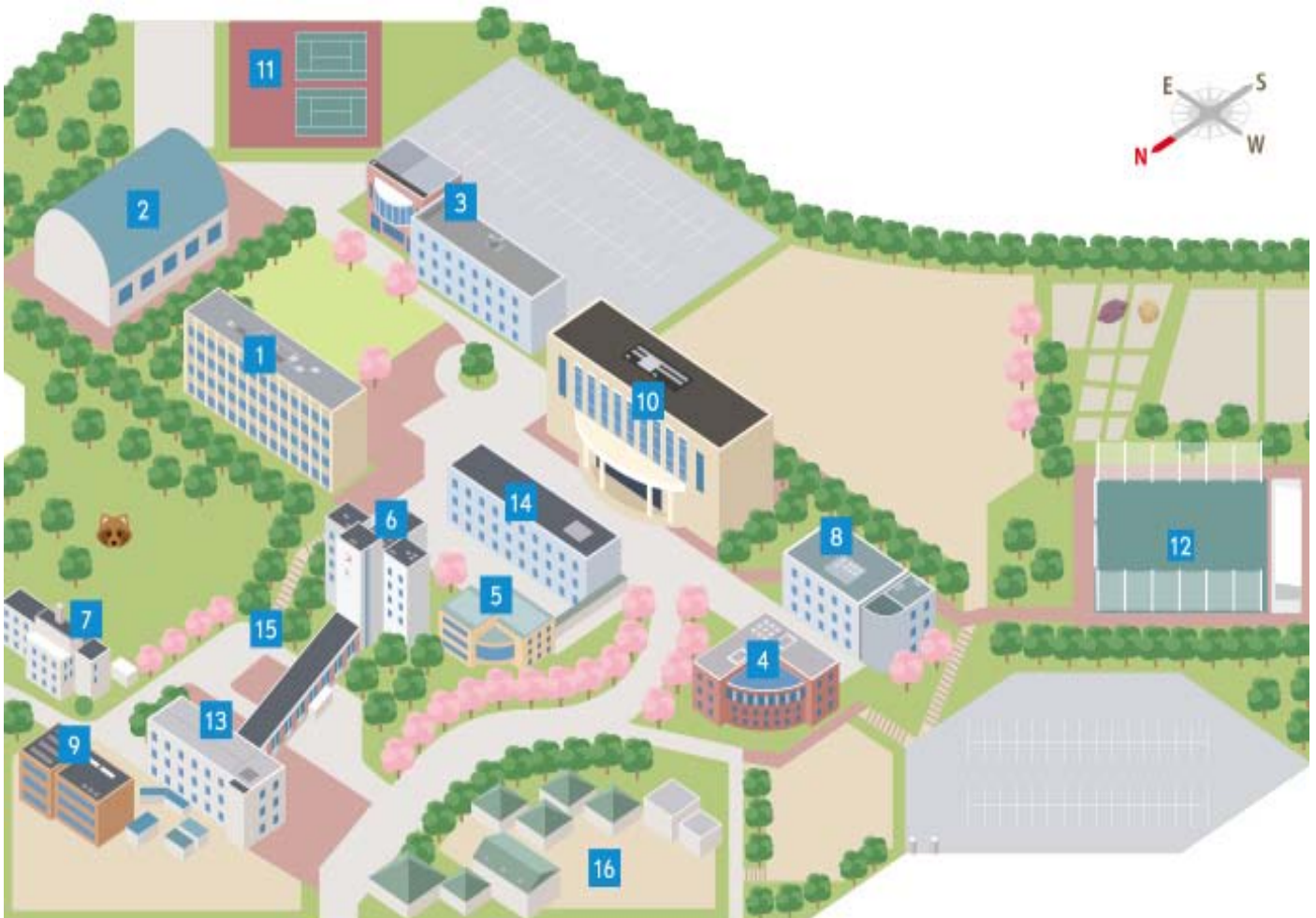
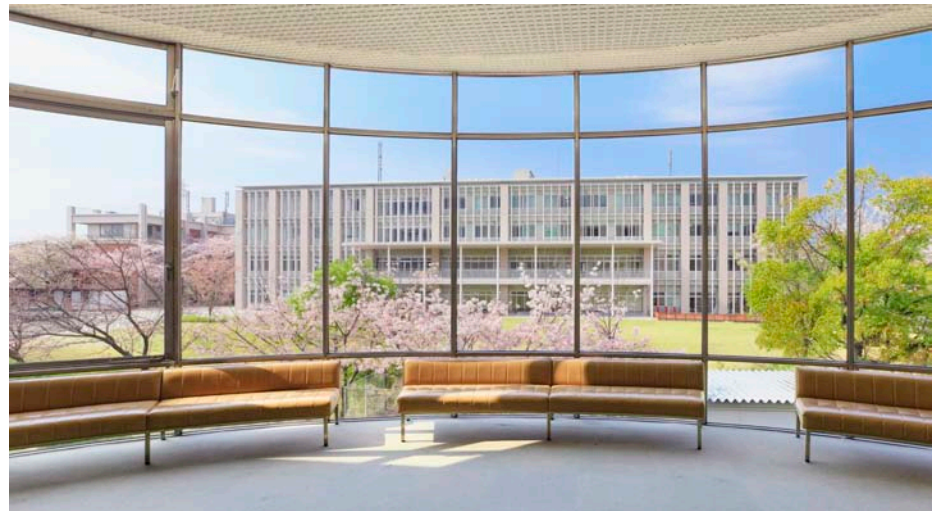
Ohkagakuen University, abbreviated as OU hereafter, is a four-year women's university established in 1998, deriving from Toyota Junior College which Ohkagakuen Academy established in 1990. Besides OU, Ohkagakuen Academy has two-year Nagoya Junior College (established in 1955), Ohkagakuen High School (established in 1948), and Nagoya Junior College Attached Kindergarten (established in 1967). OU comprises two schools (School of Early Childhood Education and Care; School of Liberal Arts) and a graduate school (Course of Human and Culture). The campus is crowded with some two thousand students of the five (six, from 2018) departments on campus. Exchange students are to belong to the School of Liberal Arts

OU is located in Toyoake City in Aichi Prefecture, whose campus is adjacent to Okehazama Battle Field, a famous historical site of Japan. Toyoake City shares its boundary with Nagoya City, a central city of Chubu Area. It will take some forty minutes by car from Chubu Centrair International Airport to OU; half an hour by Meitetsu train from Nagoya Station. OU is located in a very convenient place with good access. It will be forty minutes by bus or train to Sakae, a fashionable town for young people. Nagoya also has easy access to neighbouring area. It will be an hour and forty minutes by Shinkansen from Nagoya to Tokyo; fifty minutes to Shin-Osaka Station.



Introduction of the campus facilities

- ① Building 7
- ② Gymnasium
- ③ Building 5
- ④ Library
- ⑤ Cherry Plaza 99
- ⑥ Building 0 / 1
- ⑦ Seminar House
- ⑧ Student Hall
- ⑨ Building 6
- ⑩ Research and Administration Building
- ⑪ Tennis Court
- ⑫ Driving Range
- ⑬ Building 2
- ⑭ Building 3
- ⑮ Omikuji Stairs
- ⑯ Kindergarten



Curriculum in 2017 academic year

The curriculum consists of four course groups: Ohkaology courses, basic courses, Japanese courses, and specialized courses. Students are allowed to freely enroll in 16 to 19 credits per semester. Content can be changed.

1. Ohkaology Courses

* You are not allowed to enroll in more than one course in each area at the same time in principle.

Area	Spring Semester (credits)	Area	Fall Semester(credits)
Know Thyself	Contemporary Society and Women (2)	Know the Society	Regional Society (2)
	Women and Gender (2)		Human Beings and History (2)
	The World of Art (2)		
Know Human Beings	The World of Literature (2)	Know the World	Cross-cultural Understanding (2)
	Quest for Mind (2)		Japanese Culture (2)
	Quest for the Way of Life (2)		International Relations (2)
Know the Nature	Living and Economy (2)		Religions of the World (2)
	Environmental Science (2)		
	Science of Diet and Life (2)		

2. Basic Courses

Spring Semester	Fall Semester
Sport: Golf (1)	Theory of Sports and Health (2)
Sport: Soccer (1)	Sport: tennis (1)
Social Research Method (2)	Sport: Badminton (1)
Theory of NGOs and NPOs (2)	Social Informatics (2)
Contemporary Society and Businesses (2)	Domestic Volunteer (1)
Seminar of Regional Cooperation (2)	
Domestic Volunteer (1)	

3. Japanese Courses

Spring Semester	Fall Semester
Japanese Expression I (1)	Japanese Expression II (1)
Japanese Expression III (1)	Japanese Expression IV (1)
Japanese A (1)	Japanese B (1)
Japanese C (1)	Japanese D (1)

4. Specialized Courses

Area	Spring Semester	Fall Semester
Tourism	Tourism English I (2)	Tourism English II (2)
	Theory of Tourism Studies (2)	Domestic Travel Chorography (2)
	Tourism Hospitality (2)	Tourism Marketing (2)
	Foreign Travel Chorography (2)	Tourism and Subculture (2)
		Theory of Tourism Policy (2)
Culture	Seminar I (1)	Seminar II (1)
	Social Anthropology (2)	Asian Studies (2)
	Japanese Studies (2)	Comparative Cultural Studies (2)
	American Studies (2)	Cross-cultural Studies (2)
	British Studies (2)	Oceanian Studies(2)
	Fieldwork (2)	Fieldwork (2)

Annual Events of the School of Liberal Arts

April

Entrance Ceremony; Orientation
Freshman Orientation Trip
Fieldwork trip to Mino or Toki
Spring semester stars; Showa Day



October

Health-Sports Day
Halloween Party

May

Constitution Day; Greenery Day
Children's Day
Freshman Welcome Party
Chubu Walkathon



November

Culture Day
University Festival; Open Campus
Labour Thanksgiving Day

June

Foundation Day; Open Campus
Arimatsu Fabric Festival
Okehazama Festival
Art Program



December

Emperor's Birthday
Christmas Party
Kariya-shi International Exchange Festa
Class Make-up Days

July

Marine Day; Summer Party
Mando Festival
Open Campus
Spring Semester ends



January

New Year's Days
Coming-of-Age Day
Make-up Lecture Days
Fall Semester ends

August

End-of-Semester Exams
Grade announcement; Make-up Exams
Make-up Lecture Days
Summer Vacation starts
Open Campus; Mountain Day



February

End-of-Semester Exams
Grade announcement
Make-up Exams
National Foundation Day

September

Tourism EXPO & Disney Academy
Fall Semester Guidance: Classes start
Respect-for-the-Aged Day
Open Campus; Autumnal Equinox Day



March

Diploma Awarding
Ceremony
Vernal Equinox Day



Accommodation

At present, there is no dormitory on the OU campus. Instead, OU offers exchange students a room of an apartment house, whose owner OU makes a contract with. We will offer such accommodation as shown below which we used in 2014.

1. Location: Midori-ward, Nagoya-shi, Aichi Prefecture
2. House: Three-storied steel-frame construction; female only
3. Square meters of area occupied: 29~32 m²
4. Environment: quiet residential area
 - 350m to OU; 5 minutes on foot
 - 540m to a supermarket; 7 minutes on foot
 - 500m to a convenience store; 6 minutes on foot
5. Access: 15 minutes on foot from Chukyo-keibajo-mae Station
 - 360m, 5 minutes on foot from Jizoike Bus Stop
6. Facilities: TV set, laundry machine, microwave oven, gas stove, refrigerator, double decker, book shelf, steel desk, chair, closet, air conditioner, unit-type bathroom, washstand, kitchen, balcony, screen door, intercom, vacuum cleaner, internet (Wi-Fi available)
7. Two students are supposed to reside in an apartment room.
8. Students may cook their own meal in their room. They need to pay their food expenses.

Living Expenses

Living expense differs from person to person. Below, therefore, is just a rough estimate for your reference.

- 1) **There is no tuition fee for you to pay Ohkagakuen University.** As for the payment to Soonchunhyang University, please refer to them directly.
- 2) **You have to pay your own travel expenses between Korea and Japan.**
- 3) There is no dormitory available on OU campus. Instead, you will be offered a room of a local apartment house. You can stay there during spring/summer vacation as well.

★Annual living expenses on average necessary to live alone in Japan are]

House rent: ¥55,000×12 months = ¥660,000 (plus deposit and key money)

Water bill & fuel and light expenses: ¥10,000×12 months = ¥120,000

Communications expenses: ¥10,000×12 months = ¥120,000

Total: ¥900,000 (per year)

4) **However, the house rent and expenses for water, fuel and light can be exempted on condition that the student should participate in the activities in the ESC, or English Study Center, and departmental events.** Activities in the ESC mean to stay in the center for a couple of hours per week and communicate with Japanese students in English. (Japanese is forbidden in the ESC). Departmental events may include Open Campuses; events planned by students; and man-to-man study with the Japanese students.

5) You may cook your own meal in your room. You have to pay for your meals and living expenses. It is said that the average food expenses of a student living alone are 30,000 yen per month. Also, you will need money to use for your leisure and to dress up. In total, living expenses may be estimated as 60,000 to 70,000 yen per month including food expenses.

6) As a study event planned by the department, we have Freshman Orientation Trip, Fieldwork trip to Mino, or Toki, Art Program in the spring semester; and Tourism EXPO & Disney Academy study trip in the fall semester. **If you join all, it will cost you some 70,000 yen.** Please look forward to these events, since they are very educational events where you can have a hands-on experience to know Japanese traditional culture and to communicate with Japanese students.

7) You need to pay for the materials necessary to learn. However, OU has several facilities; library, English Study Center, computer rooms, piano practice room, etc. You may use them for free.

8) You need to obtain an overseas study visa before you come to Japan to study. After arriving in Japan, you are asked to register as a foreign resident, to be issued a resident card, and to open a bank account. **You may need to pay several thousand yen when you do these registrations at the government offices.**

9) After you arrive in Japan, it is a must that you join national health insurance; and 'the personal accident insurance for student pursuing education and research' and 'insurance for accidents involving third parties or their property.' You must pay some 60,000 yen per year for the former; and some 1,500 yen per year for the latter.

10) **You must pay for the cost necessary to use a mobile or a smart phone in Japan.**

Q. How long can I study at Ohka?

You may study for half a year or a year. Since Ohka has two semester system, you will study for one or two semesters.

Q. Can the credits be exchanged?

Yes, they can. You can obtain 16 to 19 credits per semester at OU. You need to ask your university how they will acknowledge them.

Q. When do I need to get registered?

After you arrive in Japan, you will do it during the course registration period. You may not enroll in all the courses you want to because of the timetable, which will be shown in time.

Q. Are there any qualifications I can gain?

It depends on the time of your stay. We will offer instructions on Japanese competency test, TOEIC test, Test of World Heritage Study, and travel related certifications.

Q. What is the class schedule of a day?

The first period starts at nine o'clock; the fifth period ends at 18 o'clock. Lunchtime is between 12:10 to 13:10. One period has 90 minutes; and there is a ten-minute break between classes.

Q. Can I take courses taught in English?

Yes, you can. The School of Liberal Arts has three native English teachers and four teachers specializing in English. Along with its distinguished facilities, SLADE provides a great environment to study English.

Q. Is a notebook PC necessary?

Yes, it is. You may tote yours, but you need a Mac notebook to study at SLADE. You do not need to buy a new one. We will provide one for you.

Q&A

Q. When are the regular exam periods?

They will happen at the end of each semester in July/August and in January/February. You may have mid-term test as well.

Q. What are the grade criteria?

OU evaluates students with the five-grade system. 100 to 90 points will be AA; 89 to 80 A; 79 to 70 B; 69 to 60 C; 50 to 0 F.

Q. Is the Internet available on campus?

Yes, it is. In most classrooms and facilities, you can use the Wi-fi of the OU. There certainly are spots where you cannot, but the Internet environment is improving year after year.

Q. Can I work part-time?

You will need to obtain a permit to engage in activity other than that permitted. Also, it is not so easy to find a short-term part-time job in Japan. It is possible, though, if you can find a job that meets the condition.

Q. When do we need to come?

Since you need to attend the Orientation before classes start, come by the end of March for the spring semester; by the middle of September for the fall semester. You need to obtain an overseas study visa in advance. Details will be announced in time.

Q. Can we go back to Korea during vacation?

While your overseas study visa is in effect, you can go home. Before you go home, however, you need to take necessary proceedings to return to Japan.

Q. Is there any one I can consult with when in trouble?

By choosing a seminar, you can ask the seminar teacher for advice on course registration or living chores. You can also ask a Korean staff member and a Korean teacher for advice in your native tongue.

Global Exchange of OU School of Liberal Arts



Contact Details

〒470-1191

Ohkagakuen University

48 Takeji, Sakae-machi, Toyoake-shi, Aichi Prefecture JAPAN

TEL. +81-562-97-6311 FAX. +81-562-97-6959

Email:

Entrance Exam & PR koho@ohkagakuen-u.ac.jp (entrance exam)

Takanori Sai : sai@ohkagakuen-u.ac.jp (international exchange)

Eunjin Do : korandojp@ohkagakuen-u.ac.jp (study abroad)

www.ohka.ac.jp

 @ohka_eigo

 www.facebook.com/ohka_eigo

学校法人桜花学園



桜花学園大学